

15918 Chieftain Avenue

Rockville, MD 20855

List Price \$635,000 ~ Residences at Shady Grove



Luxury awaits you in this fabulous 4 Level, 4 Bedroom, 4.5 Bath upscale Townhome located right across from Shady Grove Metro! Fantastic home features include gorgeous hardwood floors and elegant moldings. The entry level has a Bedroom or Office with full Bath and access to the 2-car garage. The first upper level includes a spacious Living room and separate Dining area, beautiful gourmet Kitchen with granite counters, Island seating, stainless steel appliances, wine storage and walk-in pantry.

The next level has the Primary Bedroom with a large customized walk-in closet plus a luxurious Primary Bath with doubles sinks and oversized shower. A second Bedroom with its own Bath and laundry area complete the level. The fourth-level includes a great Family room with wet bar and 2-sided gas fireplace, Office or 4th Bedroom, full Bath plus an exciting roof top deck entertainment area! Other amazing features include 3 Bedrooms w/ensuite baths, 9' ceilings, 2-zone hi-efficiency natural gas heating, 2-car garage, driveway parking & so much more! Located just steps to Shady Grove Metro with great access to 370/270, the ICC, King Farm & Rockville Town Center, you will enjoy suburban living yet have all the city conveniences right outside your door!



Robert Kerxton • 301.785.9075

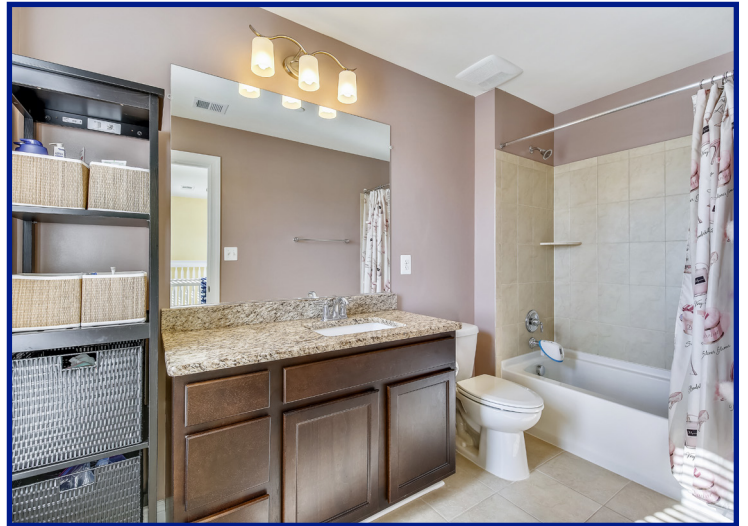
Email: rkerxton@remax.net

Office: 301-774-5900

www.RobertKerxton.com







OTHER FACTS AND FEATURES:

- Built in 2015 ~ Residences at Shady Grove
- Living square footage approx. 2460 ~ 4 Bedrooms 4.5 Baths
- 2 zoned natural gas hi-efficiency HVAC systems
- Current Schools:
 - Candlewood Elementary
 - Shady Grove Middle
 - Magruder High
- Estimated property tax and non-tax charges a new owner will pay in the first full fiscal year of ownership \$6,945.50 ~ \$77 HOA per month ~ \$800 private utility charge yearly



