

4605 Clemson Road

College Park, MD 20740

List Price \$885,000 ~ Calvert Hills



Welcome to 4605 Clemson Road in sought-after Calvert Hills! This is the ONE YOU'VE BEEN WAITING FOR!! Spectacularly updated/renovated from top-to-bottom! Some of the many wonderful features and amenities include a huge Family room addition off the Kitchen with vaulted ceiling and skylights, gorgeous wood floors throughout (no shoes house!), unbelievable gourmet Island Kitchen with high-end appliances and Miele built-in coffee maker, elegant Living room with fireplace, cozy Sitting room and updated Powder room complete the main level.

The upper level offers 3 Bedrooms, a beautiful fully renovated Bath plus access to a spray-foam insulated & floored attic. The fully finished Lower level has a 4th Bedroom Suite with kitchenette, updated full bath, Rec room with built in surround sound, laundry and utility room plus an exit to the outside. Now let's talk about the outside!!! The professionally landscaped yard includes a designer brick patio and stone retaining wall, beautiful green lawn with stone steps and walkways, stunning landscaping with exterior lighting all around plus a long brick driveway leading to an oversized two-car garage with automatic opener.

Other amazing features include high-end Pella replacement casement windows, LED interior lighting, brand new metal/steel roof, new HVAC and HWH and the list goes on and on! Perfectly located on Clemson Rd (with very little drive by traffic) just a short walk to Starbucks & Whole Foods, Trader Joe's, The Station at Riverdale Park, College Park Metro, UMD and so much more! With over \$275K of recent updates you won't want to miss the opportunity to call this "one of a kind" house your new home!



Robert Kerxton • 301.785.9075

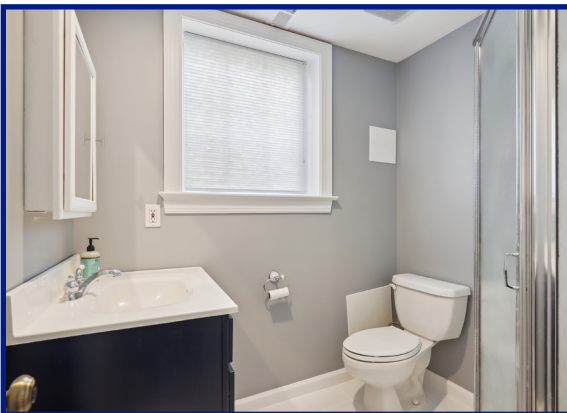
Email: rkerxton@remax.net

Office: 301-774-5900

www.RobertKerxton.com







OTHER FACTS AND FEATURES:

- Built in 1930 ~ Calvert Hills Community
- Beautiful professionally landscaped .192-acre lot (8,385 sqft) ~ Very light traffic on Clemson Road
- Family room addition in 2001, approx. 2550 fin sqft
- New metal/steel roof, Pella windows (Architect Series), Marvin Signature Ultimate Contemporary Casement Windows and Doors, new HVAC & hot water heater
- Estimated Property Tax and other non-tax charges a new owner will pay in the first fiscal year \$9571.07.

